



# MONTHLY MEMBERSHIP PROGRESS REPORT

District 411 A

Results as of: 03/31/2018

GMT: KAMAL JOSHI

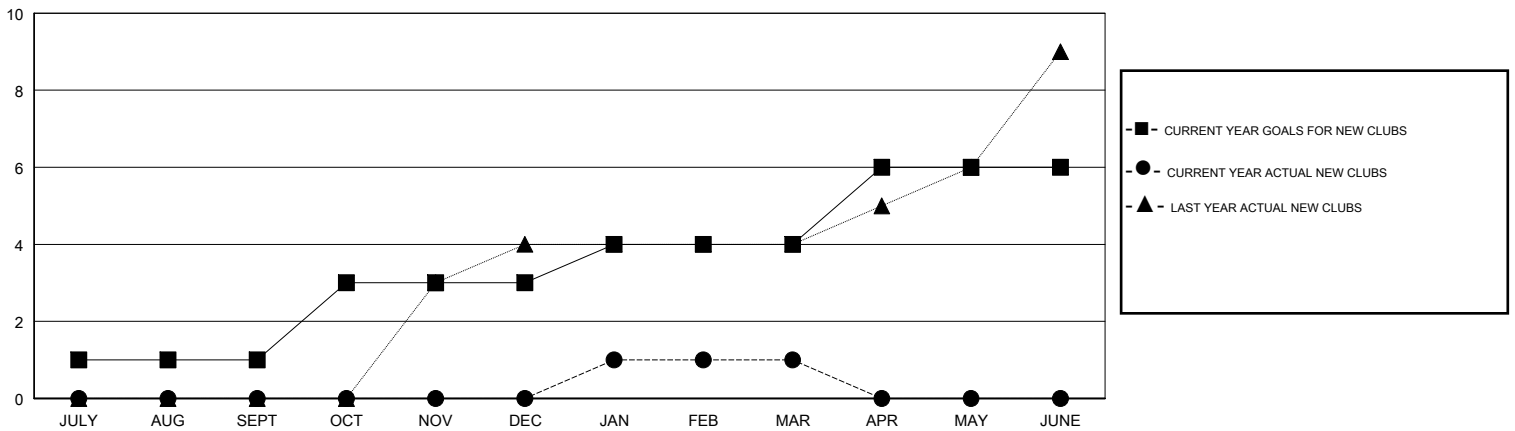
LOCATION KENYA AFRICA

GMT CA

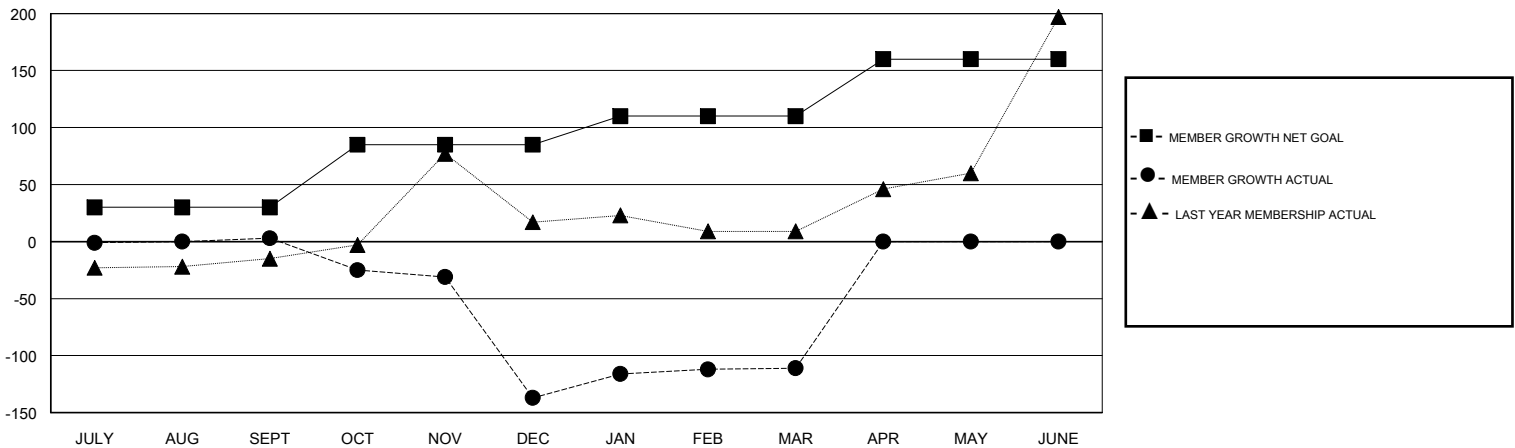
Clubs			
RESULTS FOR 2017-2018			
QUARTER	NEW CLUB GOAL	NEW CLUBS	DROPPED CLUBS
JULY/AUG/SEPT	1	0	0
OCT/NOV/DEC	2	0	5
JAN/FEB/MAR	1	1	0
APR/MAY/JUNE	2	0	0

Members			
RESULTS FOR 2017-2018			
QUARTER	MEMBER GROWTH NET GOAL	MEMBER GROWTH ACTUAL	DROPPED MEMBERS ACTUAL (including transfers)
JULY/AUG/SEPT	30	15	11
OCT/NOV/DEC	55	26	166
JAN/FEB/MAR	25	60	29
APR/MAY/JUNE	50	0	0

GOALS AND ACTUAL NEW CLUBS CUMULATIVE



GOALS AND ACTUAL MEMBERS CUMULATIVE



DROPPED CLUBS: 5
------------------

25 CLUBS OF 77 ADDED 1 OR MORE NEW MEMBERS

GENDER DISTRIBUTION	
MALE	1,087 (62.87%)
FEMALE	642 (37.13%)
Women Percentage Fiscal Year Goal: 40%	

DROPPED MEMBERS	
DECEASED	7
CLUB CANCELLED	76
OTHER	123
<b>TOTAL</b>	<b>206</b>

[CLICK HERE FOR CUMULATIVE MEMBERSHIP DATA](#)

TOTAL FAMILY UNIT MEMBERS	322
FAMILY MEMBERS PAYING HALF DUES	176